



Trainer Equipment Requirements

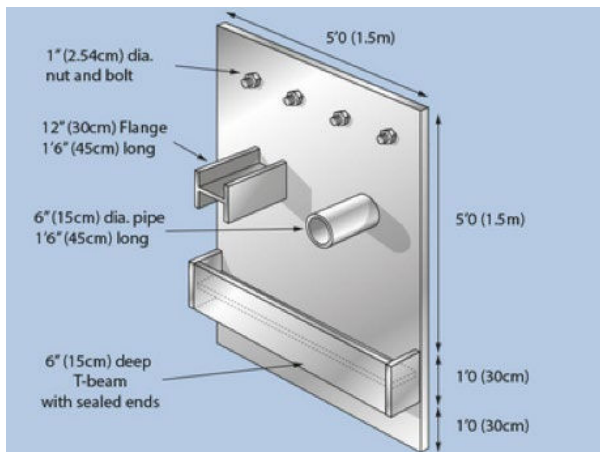
Equipment Requirements

TRAINER TO
Ensure a risk analysis/assessment is available for the practical assessment
Ensure (when using coatings, solvents etc) that the products have been assessed and control measures are in place (COSHH or equivalent)
Ensure the correct level of PPE and RPE is available to the student
Ensure the plant and equipment are safe to use and (where applicable) tested/certified for use
Ensure the test plates are suitable as per the practical assessment guides (or the alternative live structure, if this meets the requirements)

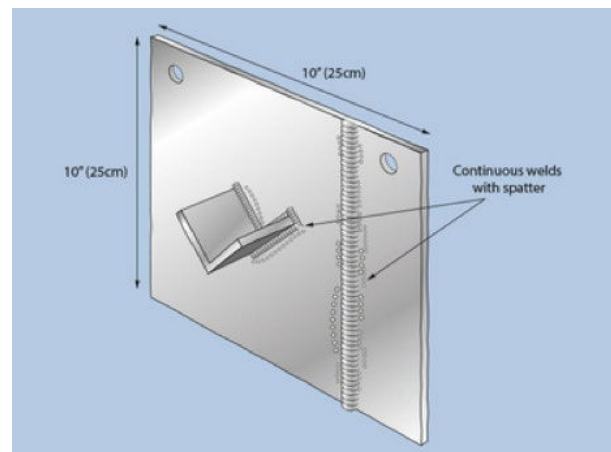
PRACTICALS (specific to individual task)	✓
Needle gun	
Hard wire brush	
Mechanical wire brush (spare brush heads)	
Disk grinder/rotary grinder or sander	
Scraper	
Chipping hammer	
Compressed air/electrical supply (as necessary)	
Heaters (if required)	
De-humidification (if required)	
Lighting (direct and in-direct)	
Washing unit (variable sizes)	
Steam cleaner (if applicable)	
Solvent (washing) rags	
Blasting equipment (blast post and associated equipment) - variable sizes available	
Spraying equipment (spray pump and associated equipment) - variable sizes available	
Abrasives	
Paint/solvents	
Abrasive paper	

PANELS	✓
Individual panels for Protective Coatings Applicator	
Group panels for Protective Coatings Applicator, Abrasive Blast Cleaner and Spray Painter	
Misc panels	
BLAST CHAMBER/CABINET (specialist blast cleaning module)	✓
Blast chamber that will allow the student and trainer access (3m x 6m minimum)	
SPRAYING FACILITIES (specialist spray painting module)	✓
The spraying should be conducted in an environment suitable for coating application in a safe manner that allows access to the student and trainer. This could be a spray booth (3m x 3m minimum) or a paint shop with suitable flooring, lighting and extraction	

Group Panel



Individual Panel



THEORETICAL	✓
Classroom must be a suitable size to accommodate the number of trainees attending the course	
A laptop/PC to access the training material	
Suitable audio visual equipment. This may be either a projector and screen or individual monitors for each trainee	
A good surface for taking notes and for theoretical assessments	
Notepads and pens	
Adequate refreshments should be available throughout the duration of the course	
Lunch facilities	
Adequate parking available for the number of trainees attending	
Joining instructions, location of the training facility and access via public transport	
A list of local hotels and B&B's to suit all budgets should be provided with the joining instructions	
Toilet facilities	

Corrodere^o

MPI Group, Peel House, Upper South View, Farnham, Surrey, GU9 7JN, UK.

Tel +44 (0) 1252 732220 | **Fax** +44 (0) 1252 732221 | **Email** info@corrodere.com | **corrodere.com**